

# Poston Scale Packet

Oboe

Jenn Bock

## Concert F Major

One Octave Scale and Arpeggio



Musical notation for Concert F Major: One Octave Scale and Arpeggio. The notation is in treble clef with a key signature of one flat (Bb) and a common time signature (C). It shows an ascending and descending scale followed by an arpeggiated chord.

Full Range Scale



Musical notation for Concert F Major: Full Range Scale. This exercise covers the full range of the instrument, showing both ascending and descending scales.

Scale in Thirds



Musical notation for Concert F Major: Scale in Thirds. This exercise involves playing the scale in intervals of thirds, both ascending and descending.

Arpeggio Exercise



Musical notation for Concert F Major: Arpeggio Exercise. This exercise focuses on playing arpeggiated chords across the scale, both ascending and descending.

## Concert Bb Major

One Octave Scale and Arpeggio



Musical notation for Concert Bb Major: One Octave Scale and Arpeggio. The notation is in treble clef with a key signature of two flats (Bb, Eb) and a common time signature (C). It shows an ascending and descending scale followed by an arpeggiated chord.

Full Range Scale



Musical notation for Concert Bb Major: Full Range Scale. This exercise covers the full range of the instrument, showing both ascending and descending scales.

Scale in Thirds



Musical notation for Concert Bb Major: Scale in Thirds. This exercise involves playing the scale in intervals of thirds, both ascending and descending.

Arpeggio Exercise



Musical notation for Concert Bb Major: Arpeggio Exercise. This exercise focuses on playing arpeggiated chords across the scale, both ascending and descending.

## Concert Eb Major

One Octave Scale and Arpeggio



Musical notation for Concert Eb Major: One Octave Scale and Arpeggio. The notation is in treble clef with a key signature of three flats (Bb, Eb, Ab) and a common time signature (C). It shows an ascending and descending scale followed by an arpeggiated chord.

Full Range Scale



Musical notation for Concert Eb Major: Full Range Scale. This exercise covers the full range of the instrument, showing both ascending and descending scales.

Scale in Thirds



Musical notation for Concert Eb Major: Scale in Thirds. This exercise involves playing the scale in intervals of thirds, both ascending and descending.

Arpeggio Exercise



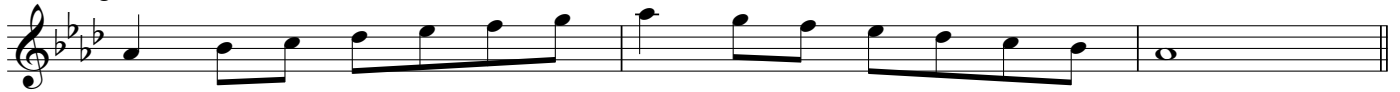
Musical notation for Concert Eb Major: Arpeggio Exercise. This exercise focuses on playing arpeggiated chords across the scale, both ascending and descending.

## 2 Concert Ab Major

One Octave Scale and Arpeggio



Full Range Scale



Scale in Thirds



Arpeggio Exercise



## Concert Db Major

One Octave Scale and Arpeggio



Full Range Scale



Scale in Thirds



Arpeggio Exercise



## Concert F# (Gb) Major

One Octave Scale and Arpeggio



Full Range Scale



Scale in Thirds



Arpeggio Exercise



**Concert B Major**

One Octave Scale and Arpeggio



Full Range Scale



Scale in Thirds



Arpeggio Exercise



**Concert E Major**

One Octave Scale and Arpeggio



Full Range Scale



Scale in Thirds



Arpeggio Exercise



**Concert A Major**

One Octave Scale and Arpeggio



Full Range Scale



Scale in Thirds



Arpeggio Exercise



### Concert D Major

One Octave Scale and Arpeggio



Full Range Scale



Scale in Thirds



Arpeggio Exercise



### Concert G Major

One Octave Scale and Arpeggio



Full Range Scale



Scale in Thirds



Arpeggio Exercise



### Concert C Major

One Octave Scale and Arpeggio



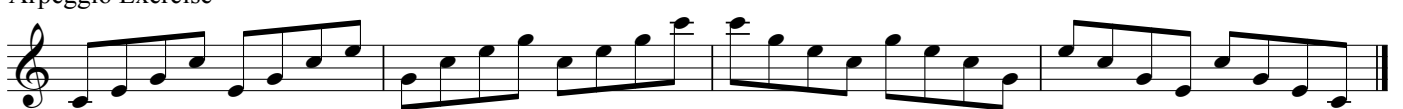
Full Range Scale



Scale in Thirds



Arpeggio Exercise



Concert Bb Chromatic Scale- One Octave

Musical notation for the Concert Bb Chromatic Scale, one octave. The scale is written in treble clef with a key signature of two flats (Bb and Eb). It consists of two lines of music, each containing a chromatic scale of eighth notes.

Concert F Chromatic

Musical notation for the Concert F Chromatic scale, one octave. The scale is written in treble clef with a key signature of one flat (F). It consists of two lines of music, each containing a chromatic scale of eighth notes.

Full Range Chromatic

Musical notation for the Full Range Chromatic scale, one octave. The scale is written in treble clef and covers the full range of the instrument. It consists of two lines of music, each containing a chromatic scale of eighth notes.

The Grand Master Scale  
One Octave

Musical notation for The Grand Master Scale, one octave. The scale is written in treble clef and consists of ten lines of music, each representing a different key signature. The key signatures are: F, Bb, Eb, Ab, Db, F#, B, E, A, D, G, and C. Each line contains a chromatic scale of eighth notes.

6 The Grand Master Scale  
Full Range

F



Bb



Eb



Ab



Db



F#



B



E



A



D



G



C

