

# Violin

## Overture

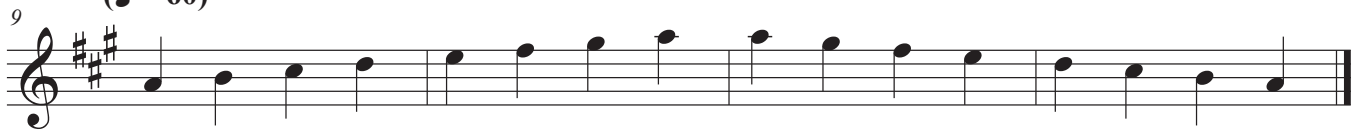
(♩ = 60)



(♩ = 60)

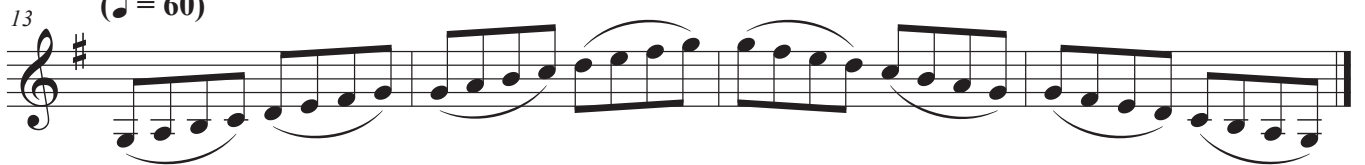


(♩ = 60)



## Intermezzo

(♩ = 60)



(♩ = 60)



(♩ = 60)



# Chamber

## Violin

Violin score for Chamber music, measures 25-50. The score is written in treble clef and consists of two systems of two staves each. The tempo is marked as  $(\text{♩} = 60)$ . The key signature changes from one sharp (F#) to two sharps (F# and C#) at measure 31, and then to two flats (Bb and Eb) at measure 37. The music features a melodic line with eighth and sixteenth notes, often beamed together, and a bass line with eighth notes. Phrasing is indicated by slurs and breath marks. The piece concludes with a double bar line and a final chord in the second system.


## Viola

## Overture

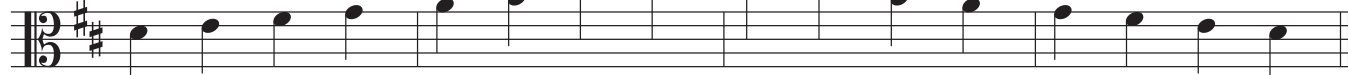
49 (♩ = 60)



53 (♩ = 60)




57 (♩ = 60)




## Intermezzo

61 (♩ = 60)



65 (♩ = 60)



69 (♩ = 60)



## Chamber

## Viola

73 (♩ = 60)

76

79 (♩ = 60)

82

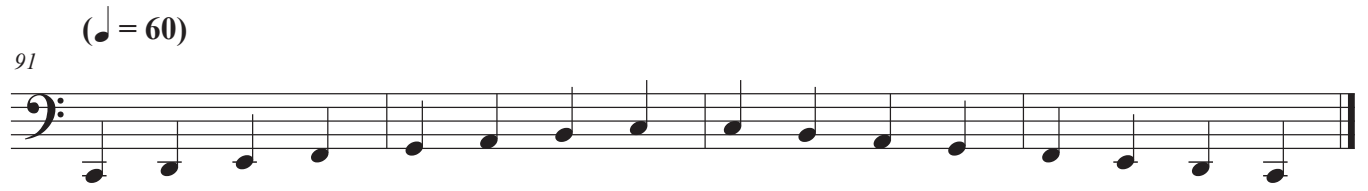
85 (♩ = 60)

88

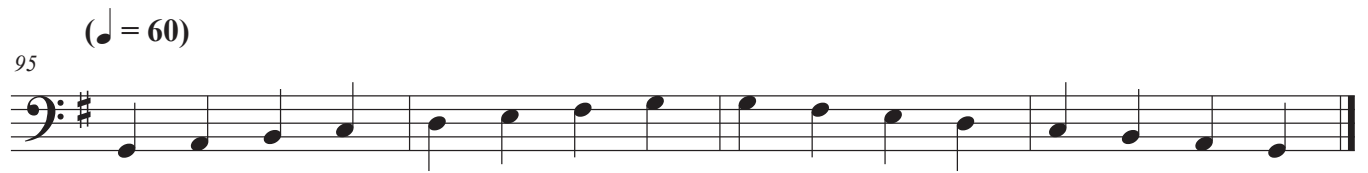
## Cello

## Overture

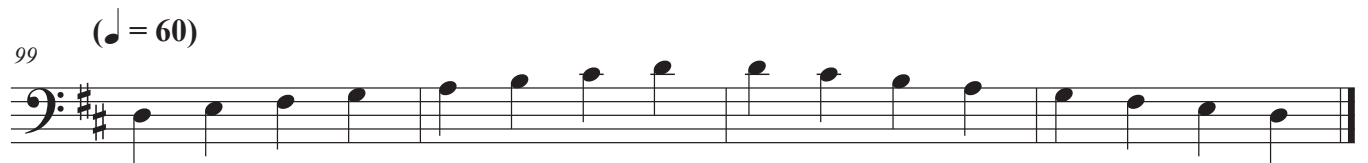
91 (♩ = 60)



95 (♩ = 60)

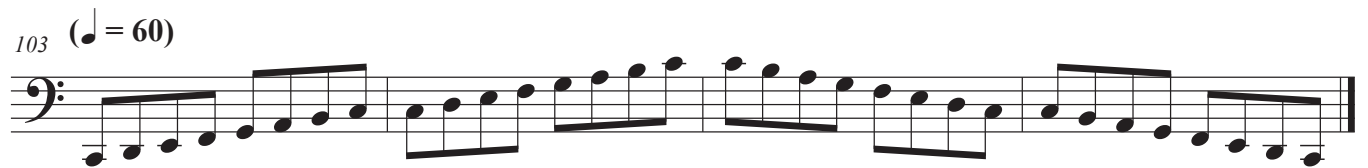


99 (♩ = 60)



## Intermezzo

103 (♩ = 60)



107 (♩ = 60)



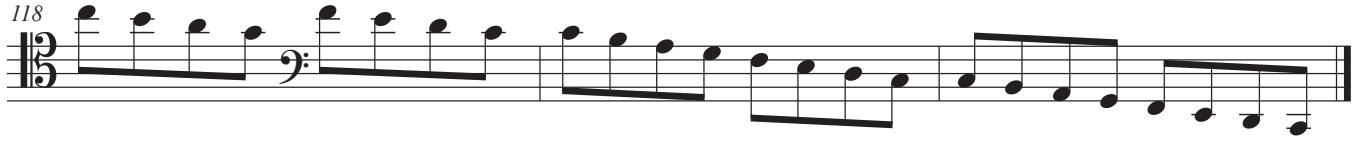
111 (♩ = 60)



## Chamber

## Cello

115 (♩ = 60)



121 (♩ = 60)



127 (♩ = 60)



## Bass

## Overture

(♩ = 60)

133

(♩ = 60)

137

(♩ = 60)

141

## Intermzzo

(♩ = 60)

145

(♩ = 60)

149

(♩ = 60)

153

(♩ = 60)

157

## Bass

## Chamber

161 (♩ = 60)

165 (♩ = 60)

169 (♩ = 60)

173 (♩ = 60)