

Poston Scale Packet

Trombone

Jenn Bock

Concert F Major

One Octave Scale and Arpeggio



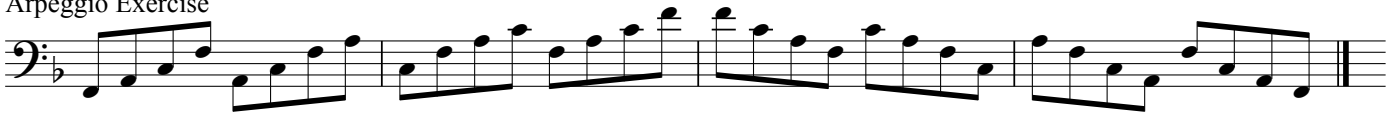
Full Range Scale



Scale in Thirds



Arpeggio Exercise



Concert Bb Major

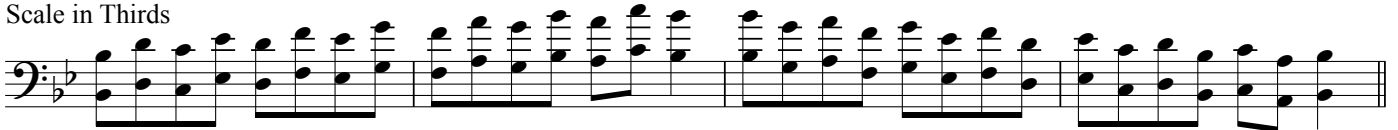
One Octave Scale and Arpeggio



Full Range Scale



Scale in Thirds



Arpeggio Exercise



Concert Eb Major

One Octave Scale and Arpeggio



Full Range Scale



Lower octave can only be played on a trigger trombone.

Scale in Thirds

Musical notation for Scale in Thirds in Ab Major, bass clef, 4/4 time. The exercise consists of two lines of music, each with four measures. The first line contains two ascending and two descending lines of triads. The second line contains two ascending and two descending lines of triads.

Arpeggio Exercise

Musical notation for Arpeggio Exercise in Ab Major, bass clef, 4/4 time. The exercise consists of two lines of music, each with four measures. The first line contains two ascending and two descending lines of eighth-note arpeggios. The second line contains two ascending and two descending lines of eighth-note arpeggios.

Concert Ab Major

One Octave Scale and Arpeggio

Musical notation for One Octave Scale and Arpeggio in Ab Major, bass clef, 4/4 time. The exercise consists of two lines of music. The first line contains an ascending scale followed by a descending scale. The second line contains an ascending arpeggio followed by a descending arpeggio.

Full Range Scale

Musical notation for Full Range Scale in Ab Major, bass clef, 4/4 time. The exercise consists of two lines of music. The first line contains an ascending scale. The second line contains a descending scale.

Scale in Thirds

Musical notation for Scale in Thirds in Ab Major, bass clef, 4/4 time. The exercise consists of two lines of music, each with four measures. The first line contains two ascending and two descending lines of triads. The second line contains two ascending and two descending lines of triads.

Arpeggio Exercise

Musical notation for Arpeggio Exercise in Ab Major, bass clef, 4/4 time. The exercise consists of two lines of music, each with four measures. The first line contains two ascending and two descending lines of eighth-note arpeggios. The second line contains two ascending and two descending lines of eighth-note arpeggios.

Concert Db Major

One Octave Scale and Arpeggio

Musical notation for One Octave Scale and Arpeggio in Db Major, bass clef, 4/4 time. The exercise consists of two lines of music. The first line contains an ascending scale followed by a descending scale. The second line contains an ascending arpeggio followed by a descending arpeggio.

Full Range Scale

Musical notation for Full Range Scale in Db Major, bass clef, 4/4 time. The exercise consists of two lines of music. The first line contains an ascending scale. The second line contains a descending scale. A note in the second measure of the second line is circled.

Lower octave can only be played on a trigger trombone.

Scale in Thirds

Musical notation for Scale in Thirds in Db Major, bass clef, 4/4 time. The exercise consists of two lines of music, each with four measures. The first line contains two ascending and two descending lines of triads. The second line contains two ascending and two descending lines of triads.

Arpeggio Exercise

Musical notation for Arpeggio Exercise in Db Major, bass clef, 4/4 time. The exercise consists of two lines of music, each with four measures. The first line contains two ascending and two descending lines of eighth-note arpeggios. The second line contains two ascending and two descending lines of eighth-note arpeggios.

Concert Gb (F#) Major

One Octave Scale and Arpeggio



Full Range Scale



Scale in Thirds



Arpeggio Exercise



Concert B Major

One Octave Scale and Arpeggio



Full Range Scale



Scale in Thirds



Arpeggio Exercise



Concert E Major

One Octave Scale and Arpeggio



Full Range Scale



Scale in Thirds



Arpeggio Exercise



Concert A Major

One Octave Scale and Arpeggio

Full Range Scale

Scale in Thirds

Arpeggio Exercise

Concert D Major

One Octave Scale and Arpeggio

Full Range Scale

Lower octave can only be played on a trigger trombone.
Scale in Thirds

Arpeggio Exercise

Concert G Major

One Octave Scale and Arpeggio

Full Range Scale

Scale in Thirds

Arpeggio Exercise

Concert C Major

One Octave Scale and Arpeggio

Full Range Scale

Lower octave can only be played on a trigger trombone.

Scale in Thirds

Arpeggio Exercise

Concert Bb Chromatic Scale- One Octave

Concert F Chromatic

Full Range Chromatic

The Grand Master Scale

One Octave

F



Bb



Eb



Ab



Db



Gb



B



E



A



D



G



C



The Grand Master Scale

Full Range

F

Musical staff for F major scale, bass clef, one flat. The scale is written in eighth notes across four measures.

Bb

Eb

Musical staff for Bb major scale, bass clef, two flats. The scale is written in eighth notes across four measures.

Eb

Musical staff for Eb major scale, bass clef, three flats. The scale is written in eighth notes across four measures.

Ab

Musical staff for Ab major scale, bass clef, four flats. The scale is written in eighth notes across four measures.

Db

Musical staff for Db major scale, bass clef, five flats. The scale is written in eighth notes across four measures.

Gb

Musical staff for Gb major scale, bass clef, six flats. The scale is written in eighth notes across four measures.

B

Musical staff for B major scale, bass clef, two sharps. The scale is written in eighth notes across four measures.

E

Musical staff for E major scale, bass clef, four sharps. The scale is written in eighth notes across four measures.

A

Musical staff for A major scale, bass clef, three sharps. The scale is written in eighth notes across four measures.

D

Musical staff for D major scale, bass clef, two sharps. The scale is written in eighth notes across four measures.

G

Musical staff for G major scale, bass clef, one sharp. The scale is written in eighth notes across four measures.

C

Musical staff for C major scale, bass clef, no sharps or flats. The scale is written in eighth notes across four measures.